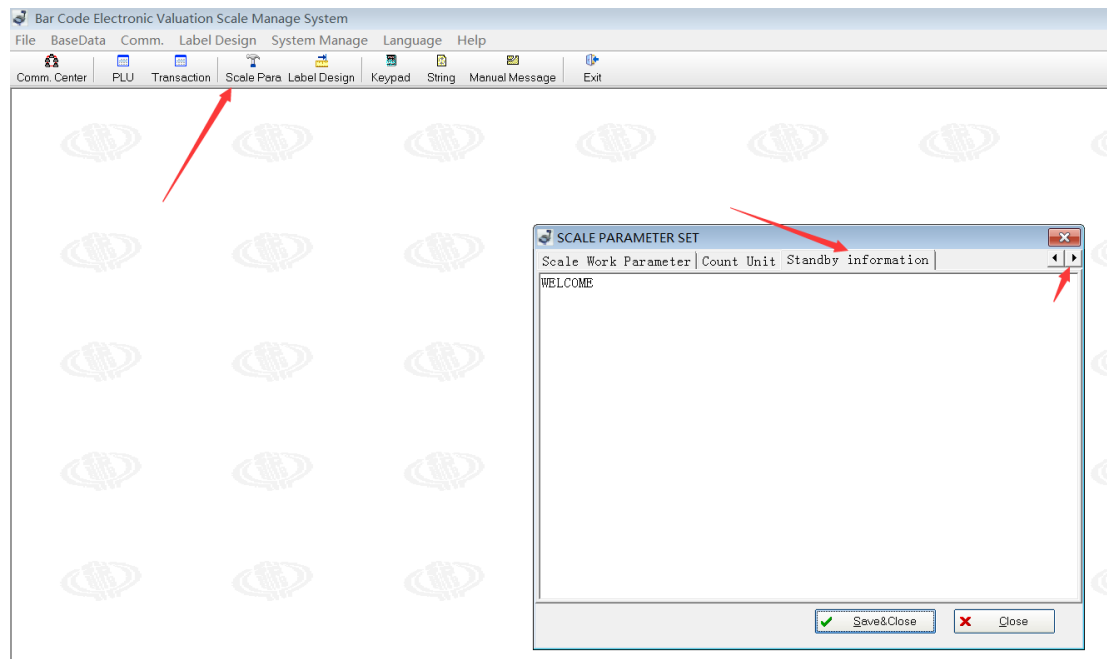
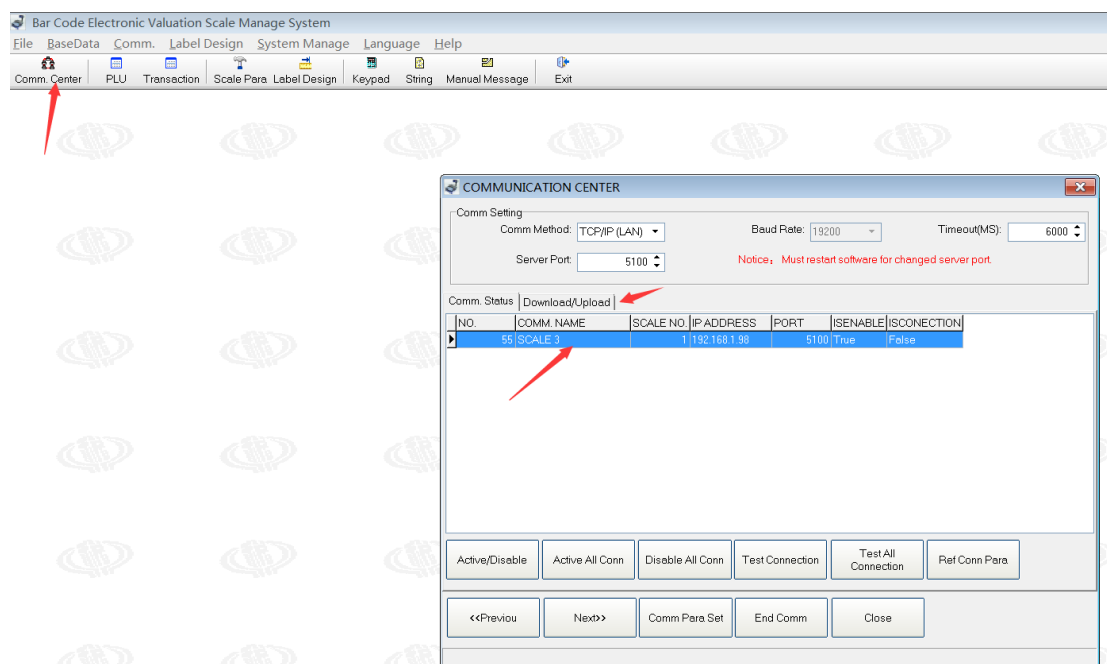


1. Run "Lscale.exe

2. Click "Scale Para -> Standby information", input message, then click "Save & Close"



3. Click "Comm. Center", add scale message(NO, Scale No, IP and so on), click "Download/Upload"



4. Select "Scale Para", click "Download Current"

The screenshot shows the 'COMMUNICATION CENTER' window. At the top, the 'Comm Setting' section includes 'Comm Method' set to 'TCP/IP (LAN)', 'Baud Rate' set to '19200', and 'Timeout(MS)' set to '6000'. Below this, 'Server Port' is set to '5100'. A red notice states: 'Notice: Must restart software for changed server port.' The 'Comm. Status' tab is active, showing 'Download/Upload'. The 'Data Type' section has several radio button options: 'PLU', 'Manual Message', 'LOGO', 'Label Design', 'String', 'Keypad', and 'Scale Para'. The 'Scale Para' option is selected, indicated by a red arrow. Below the 'Data Type' section, there are two rows of buttons. The first row includes 'Download All', 'Download Current' (highlighted with a red arrow), 'Upload Current', 'Delete All Plu', 'Upload transaction records', and 'Clear transaction records'. The second row includes '<<Previous', 'Next>>', 'Comm Para Set', 'End Comm', and 'Close'.

COMMUNICATION CENTER

Comm Setting

Comm Method: TCP/IP (LAN) Baud Rate: 19200 Timeout(MS): 6000

Server Port: 5100 Notice: Must restart software for changed server port.

Comm. Status Download/Upload

Data Type

☐ PLU ☐ Manual Message ☐ LOGO

☐ Label Design ☐ String

☐ Keypad ☒ Scale Para

Download All Download Current Upload Current Delete All Plu Upload transaction records Clear transaction records

<<Previous Next>> Comm Para Set End Comm Close